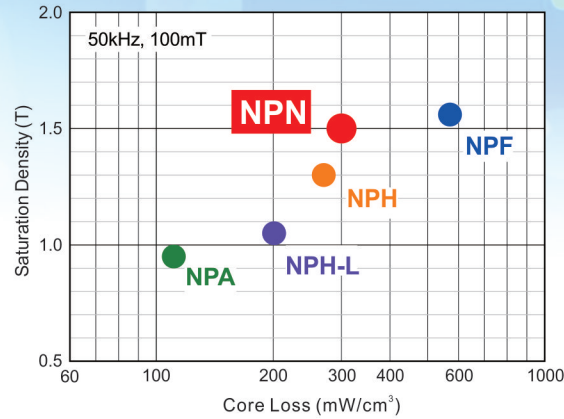


NPN (50kHz~100kHz)



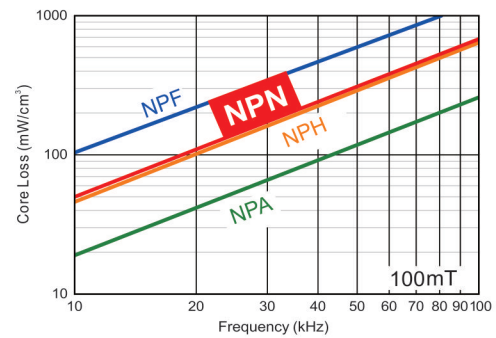
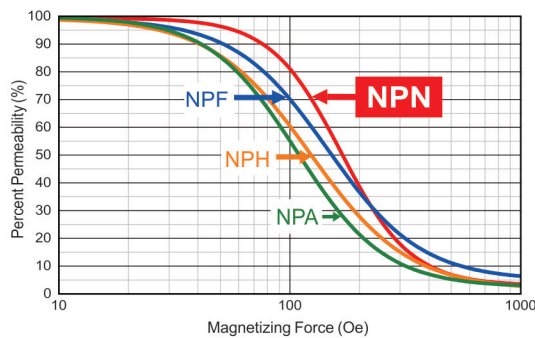
材料性能比较

Comparison of Materials Characteristics



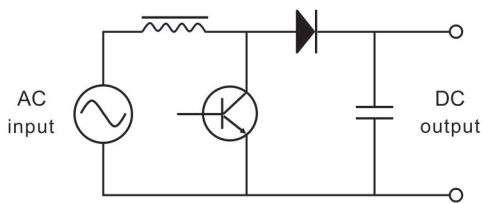
直流偏置和损耗特性

DC-Bias & Core Loss



适用于服务器电源、新能源汽车等领域

Suitable for server power supply, EV, etc.



应用 Application	PFC inductor
频率 Frequency	65 kHz
功率 Power	800 W
感量 Inductance	571 μH
磁芯 Core	环形 Toroid (OD 1.06 inch)
绕组 Winding	75 Turns

基本信息

Basic information

磁导率 Permeability
60

尺寸 Size (inch)
0.68~1.84



* 备注：所有性能参数均由铂科测试平台提供。Notes: All data are provided by POCO testing platforms.

